

康普艾節能科技(股)公司，提供優於同等級的燈具照明及光源系統節能整合方案，隨時滿足企業主對節電節費的渴望及需求...



## 燦光「高節能」燈管(內置電源)、平板燈

### 領先LED照明

比傳統LED再省電>40%

- ※ 專利技術--先進高效發光材料
- ※ 超高光效，達到>160 lm/W
- ※ 通過CNS 國家標準，不傷眼、低EMI
- ※ 額定壽命25000小時以上

LED燈管省電 >65%  
 傳統LED燈管省電 >40%  
 雙倍光效



型號	GST5-4F57K-11W	GST8-4F57K-12W	GSPL-2F2F57K-22W
適用電壓	AC100V~240V, 50Hz/60Hz		
消耗功率	11.0W±10%	12.0W±10%	22.0W±10%
發光效率	>160 lm/W	>160 lm/W	>160 lm/W
光通量	1800 Lm(min.)	2000 Lm(min.)	3600 Lm(typ.)
功率因素		PF > 0.9	
色溫	5700K±5%	5700K±5%	5700K±5%
演色性		Ra > 80	
光束角	250°	270°	140°
工作溫度	-20°C ~ +40°C		
尺寸	(D)Φ17x(L)1155mm	(D)Φ26x(L)1198mm	(L)60x(W)60mm

## *BEST LED EB T5 Lamps*



**LED lamps designed to retrofit linear fluorescent lamps**

### *EB T5 Lamps feature*

- ◆ Direct Replacement.  
Easy of use.  
No need to re-wire the fixture, direct plug-and-play.  
Reduced maintenance and Installation cost.
- ◆ Perfect for a wide range of applications  
Electric Ballast.  
Rapid & Preheat Start ballast.
- ◆ T5 all series  
**Short/HE/HO**  
212mm/288mm/517mm  
549mm/849mm/1149mm/1449mm  
Support 1 ballast for 1,2,3,4 lamps
- ◆ **Safety Replacement. NTC inside design**  
Over current/temperature protection.  
Not cause for Electric arc/Spark  
High temperature.
- ◆ Reliability  
50,000 hours rated life (L70)  
25,000 switching cycles.

## BEST LED EB T5 Lamps

Ordering, Electrical and Technical Data (Subject to change without notice)

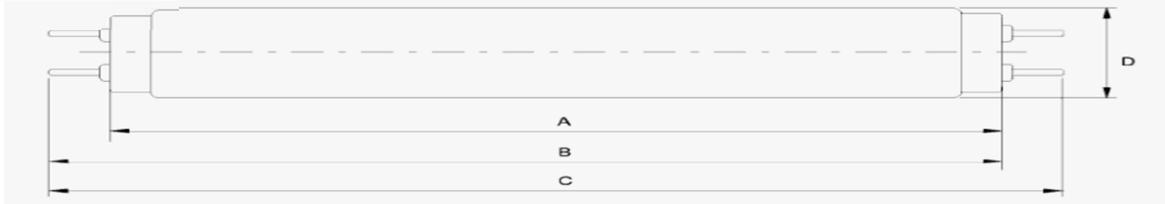
Model No.	Order No.	Volts (Depending on Ballast)	Base	CRI	Color Temp (K)	Luminance (lm)	Watt	Beam Angle	Note
LED T5 2F EB HE Tube	5EB-HE- 2F30K-AL	100-277, 347	G5	82	3000K	720	9	140	Replace fluorescent lamp 14w
	5EB-HE- 2F40K-AL	100-277, 347	G5	82	4000K	765	9	140	
	5EB-HE- 2F50K-AL	100-277, 347	G5	82	5000K	810	9	140	
	5EB-HE- 2F60K-AL	100-277, 347	G5	82	6000K	900	9	140	
LED T5 3F EB HE Tube	5EB-HE- 3F30K-AL	100-277, 347	G5	82	3000K	1040	13	140	Replace fluorescent lamp 21w
	5EB-HE- 3F40K-AL	100-277, 347	G5	82	4000K	1105	13	140	
	5EB-HE- 3F50K-AL	100-277, 347	G5	82	5000K	1170	13	140	
	5EB-HE- 3F60K-AL	100-277, 347	G5	82	6000K	1300	13	140	
LED T5 4F EB HE Tube	5EB-HE- 4F30K-AL	100-277, 347	G5	82	3000K	1500	18	140	Replace fluorescent lamp 28w
	5EB-HE- 4F40K-AL	100-277, 347	G5	82	4000K	1550	18	140	
	5EB-HE- 4F50K-AL	100-277, 347	G5	82	5000K	1620	18	140	
	5EB-HE- 4F60K-AL	100-277, 347	G5	82	6000K	1800	18	140	

## BEST LED EB T5 Lamps

Ordering, Electrical and Technical Data (Subject to change without notice)

Model No.	Order No.	Volts (Depending on Ballast)	Base	CRI	Color Temp (K)	Luminance (lm)	Watt	Beam Angle	Note
LED T6 5F EB HE Tube	6EB-HE- 5F30K-AL	100-277, 347	G5	82	3000K	1650	21	140	Replace fluorescent lamp 35w
	6EB-HE- 5F40K-AL	100-277, 347	G5	82	4000K	1650	21	140	
	6EB-HE- 5F50K-AL	100-277, 347	G5	82	5000K	1890	21	140	
	6EB-HE- 5F60K-AL	100-277, 347	G5	82	6000K	2100	21	140	
LED T5 2F EB HO Tube	5EB-HO- 2F30K-AL	100-277, 347	G5	82	3000K	1200	12	140	Replace fluorescent lamp 24w
	5EB-HO- 2F40K-AL	100-277, 347	G5	82	4000K	1320	12	140	
	5EB-HO- 2F50K-AL	100-277, 347	G5	82	5000K	1440	12	140	
	5EB-HO- 2F60K-AL	100-277, 347	G5	82	6000K	1560	12	140	
LED T5 3F EB HO Tube	5EB-HO- 3F30K-AL	100-277, 347	G5	82	3000K	1800	18	140	Replace fluorescent lamp 39w
	5EB-HO- 3F40K-AL	100-277, 347	G5	82	4000K	1980	18	140	
	5EB-HO- 3F50K-AL	100-277, 347	G5	82	5000K	2160	18	140	
	5EB-HO- 3F60K-AL	100-277, 347	G5	82	6000K	2340	18	140	

## Mechanical Parameters



G5---T5/T6					
	A	B		C	D
	Max.	Min.	Max.	Max.	Max.
T5-549	549.0	553.7	556.1	563.2	17.0
T5-849	849.0	853.7	856.1	863.2	17.0
T5-1149	1149.0	1153.7	1156.1	1163.2	17.0
T6-1449	1449.0	1453.7	1456.1	1463.2	19.0

## Application

Supermarket



Hospital



Office



School



Factory



Public transit



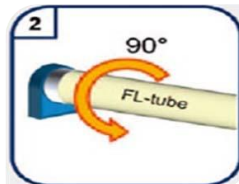
## BEST LED EB T5 Lamps

### Graphical instruction

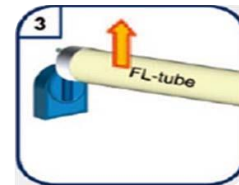
Schematic steps of removing a fluorescent lamp and inserting LED lamp



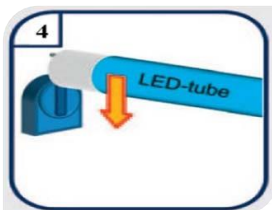
Switch off electricity.



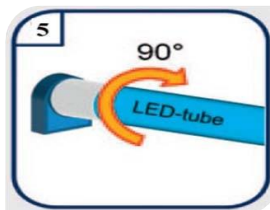
Secure the position by turning the lamp by 90° .



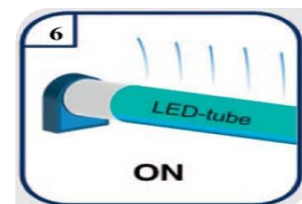
Remove the conventional lamp.



Insert the LED lamp into the lamp holder.



Secure the position by turning the lamp by 90° .



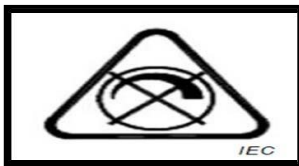
Switch on electricity and check for lamp starting.



Lamp suitable for Electronic Ballast



Lamp to be used in dry conditions or in a luminaire that provides protection



Dimming not allowed

